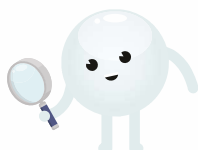
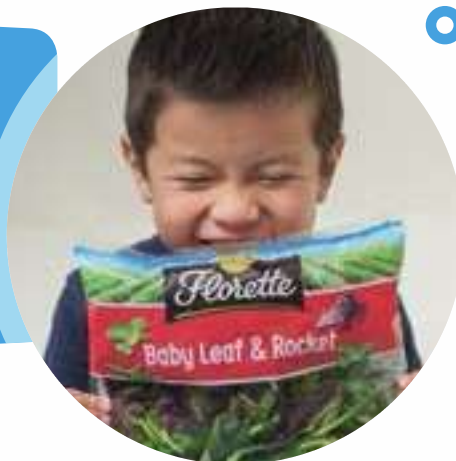


# Evaluation of The Secret World of Gases



## Overview

The evaluation programme allows ASDC and our project funders and partners to assess the national impact of this innovative STEM programme.

There are three parts to the evaluation of the families programme:

- 1. The Metrics:** This includes how many people came to your events, what you did, where, when and for whom.
- 2. The Evaluation:** This includes if children and adults in family groups felt inspired by the activities, if they enjoyed them and if they felt they learned interesting things about gases and chemistry.
- 3. The impact on your centre and staff:** At the end of the project we will ask you to fill in a questionnaire to tell us how you feel the training, equipment, resources and knowledge gained through this programme has influenced what your science centre can offer.

## Metrics: recording and reporting

We would like to know the total number of people you engage with The Secret World of Gases, as well as what your event entailed, where you ran your activities and who came. ASDC will therefore supply you with a spreadsheet to record the below metrics, and we ask you to fill this in as you go along. We will ask you to submit data to us at an interim point to check progress, and to submit the full metrics at the end of the project with your final report.

The metrics sheet will include the following:

- a. How many people you engaged.
- b. The date.
- c. The location (e.g. in your Science Centre or give other postcode).
- d. A brief description of your event (e.g. 20-minute family show or a meet-the-expert).
- e. A general description of those attending (e.g. families with children age 5 - 12, brownies).
- f. The approximate male - female split (if not 50 - 50).
- g. The estimated ages (a general overview, e.g. 30% adults, 70% children age 7 - 11).



## Details of the evaluation

- 1.** A short questionnaire will be supplied to you before you begin delivering activities.
- 2.** We are interested in the responses from the whole family group, children as well as adults.
- 3.** You can choose whether you interview families, or whether you put the evaluation forms out on the seats and let families write the answers. You are welcome to use an incentive to get families to complete the forms, for example entering all fully completed forms into a prize draw for free tickets to your centre.
- 4.** You will need to achieve at least 50 fully filled in family forms.
- 5.** Once you have the filled in forms, please input your evaluation data electronically into the Excel spreadsheet provided by ASDC.
- 6.** Please submit this excel spreadsheet to ASDC for analysis on the interim and final reporting dates given.

As with all ASDC programmes, the final project payment to science centres will only be released when we have received all your evaluation data electronically, along with your final report

